

SIMPLEX PLUG

Product Technical sheet

ABOUT

A duct plug is used to seal the space between the duct and the cable in a duct.

A plug has a dummy rod so it can also be used to close a duct without a cable inside.

The plug is divisible so it can be installed after blowing a cable in the duct.

FEATURES

- Watertight and airtight
- Simple installation around existing cables
- Seals all types of inner ducts
- Easy to retrofit
- Wide cable sealing range
- Install and remove by hand



TECHNICAL SPECIFICATIONS

- Gas Tightness: Leakage at 0.5 bar gas pressure: 1ml/minute approx
- Temperature range: -40°C to + 60°C

AVAILABLE PRODUCTS

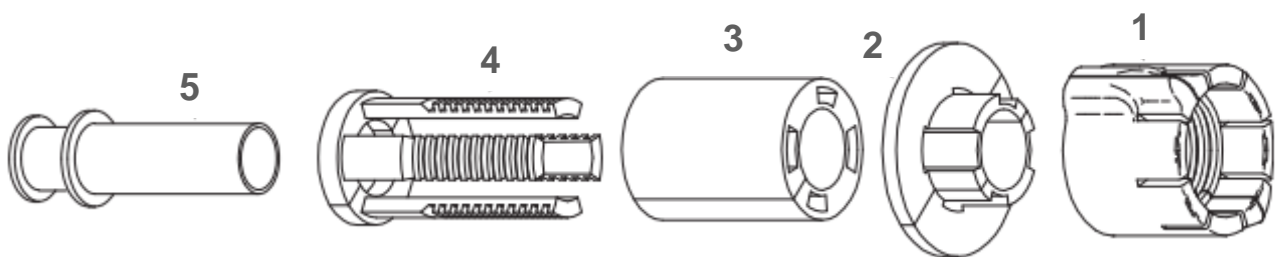
* Duct size OD (mm)	Cat No	Ø Fiber Cable Size (mm)
Simplex Plug 32/26	40032P0009B	9-14.5
Simplex Plug 40/33	40040P0009B	9-14.5
Simplex Plug 40/33	40040P0014B	14-18
Simplex Plug 50/42	40050P0009B	9-14.5
Simplex Plug 50/42	40050P0013B	13-18

Note: Dimensions stoppers can be obtained with different cable



MATERIALS

#	Part	Raw Material
1	Split Collar	PC, impact resistant
2	Split Washer	POM
3	Female Thread	POM
4	Gasket	Silicon
5	Bushing	Silicon



SIMPLEX PLUG

Product Installation Instructions

Note: In order to choose the right size of the simplex plug, first determine the inside diameter (ID) of the outer duct and the outside diameter (OD) of the cable or inner duct.

1. Remove the top sealing collar and separate it into two pieces as shown in Figure 1.
2. The fiber optic simplex duct plugs come with integral bushing sleeves which are designed to be field-split for sealing around in-place cables when needed. Use scissors or snips to split the bushing sleeves. Do not allow the splits in the bushings to overlap with the split in the main gasket assembly (Figure 2).
3. Split the gasket assembly and place it around the bushings and the cable. Reassemble the split collar around the cable and thread onto gasket assembly (Figure 3).
4. Slide the assembled duct plug along the cable into the duct to be sealed (Figure 4). Tighten by hand while holding in place. Complete the sealing process by tightening with a strap wrench.

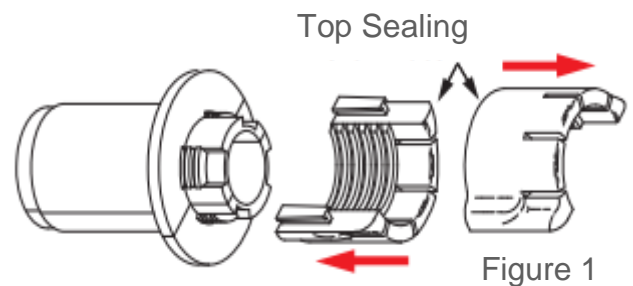


Figure 1



Figure 2

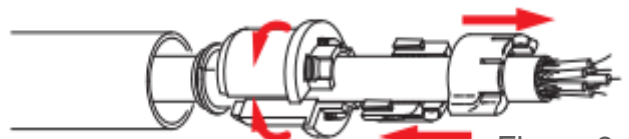


Figure 3

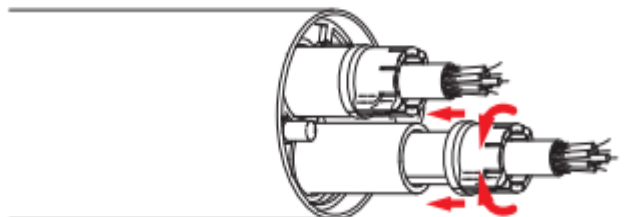


Figure 4